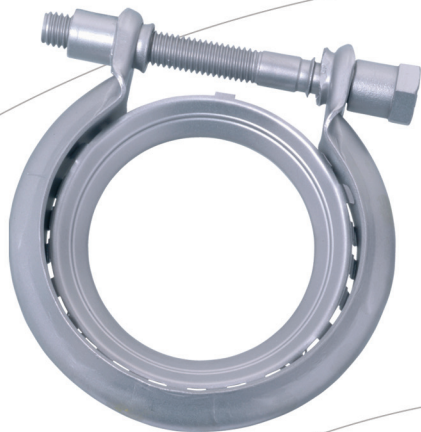


Exhaust clamps



CAILLAU



CVS® CLAMP

The CVS® clamp consists of an integral V-shaped band, a screw, a washer and a nut.

It ensures tight connections between a metal flared pipe-end and a biconical pipe up to gas temperatures of:

- 700°C for the standard CVS (ferritic stainless steel).
- 850°C / 900°C for the high-temperature CVS (austenitic stainless steel).

Strengths

Allowable leak rate below 5 litre/min at 0.3 bar (A leak rate below 0.5 litre/min can be reached depending on the application, please contact us).

Withstands high stresses (pressure, pull-off, vibration).

V-shaped profile enabling a pivot effect.

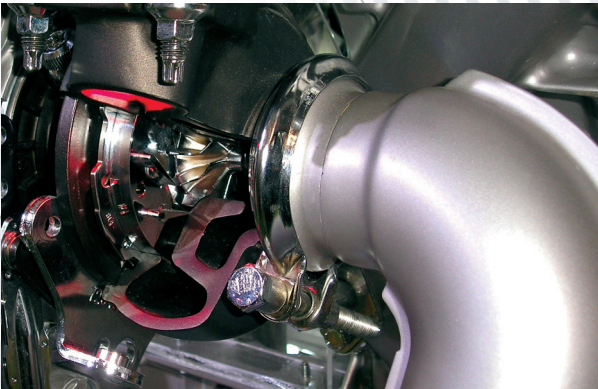
Withstands corrosion (resistance to salt spray over 400 hours).

Fitting and removal with manual tool or power screwdriver.

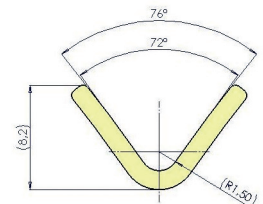
The different diameters can easily be identified with their colour marks.

2 biconical profiles are available for band widths of 20 and 23 mm.

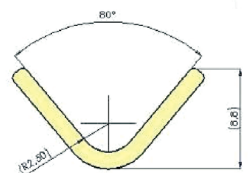
Bolts and nuts are available in steel or stainless steel versions.



CVS® 2,7 and 8 profile



CVS® 5 and 6 profile



PRE-POSITIONED CVS® CLAMP

The pre-positioned CVS® clamp consists of an integral V-shaped band, a gasket, a screw, a washer and a nut.

The fixed gasket enables pre-positioning of the clamp (clipping it) on the flared end of the pipe while improving the tightness of the connection.

Strengths

Allowable leak rate below 1.5 litre/min at 0.3 bar (standard gasket)

Easier fitting because of the pre-positioning on one of the pipes.

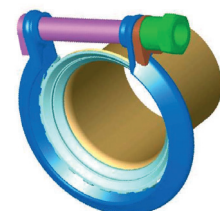
Variation

Easier removal as the screwing elements are integral with the band (the clamp opens upon unscrewing)

Hexagonal socket head screw (for limited-access areas)

Bolts and nuts in steel or stainless steel, M8 or M10.

Allowable leak rate below 0.5 litre/min at 0.5 bar with optimized gasket.

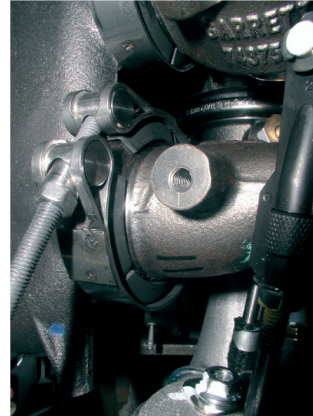
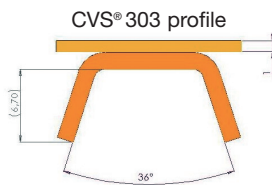


CVS® 303 CLAMP

The CVS® 303 clamp consists of a band, 5 retainer segments, a screw, a nut and 2 trunnions. It ensures a mechanical clamping between two metal interfaces up to gas temperatures of 950°C. The CVS® 303 clamp is particularly adapted for connections on turbo, exhaust manifolds, etc.

Strengths

- No hot creep up to 950°C
- Axial clamping force of 3 500 daN
- Withstands corrosion and fuels
- Fitting with manual tool or power screwdriver
- Easier removal thanks to the support lugs



B-B® CLAMP: SINGLE-SCREW END-TO-END (BOUT À BOUT) CONNECTION

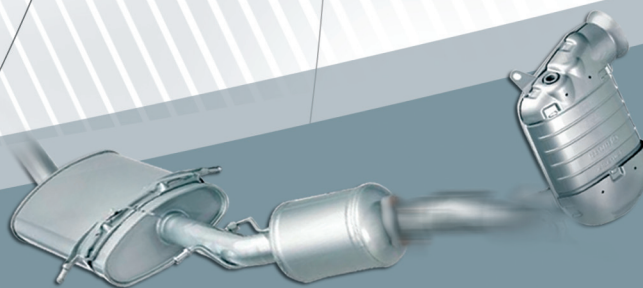
The B-B® clamp ensures the clamping of smooth unworked pipes of same diameter. It consists of an integral band (width: 80 mm, thickness: 1.5 mm), a screw, a nut, a gasket and two flanges.

Characteristics

- The B-B® clamp ensures tightness up to gas temperatures of 700°C, between two pipes having diameters different by up to 0.6 mm.
- Tensile strength: over 2 000 N
- Torsional strength: over 100 Nm
- Torsional strength after thermal cycling: over 140 Nm
- Allowable leak rate: below 10 litre/min at 0.3 bar
- The B-B® clamp withstands corrosion, vibration and automotive fluids.

Range

The B-B® clamp is mainly made of ferritic stainless steel for pipes having outside diameters of 38, 40, 42, 45, 48, 50, 55, 60 mm.



B-B® 2 CLAMP: DOUBLE-SCREW END-TO-END CONNECTION

The B-B® 2 clamp has been developed to face the increasing necessity for tightness and weight reduction on automotive exhaust lines. Its innovative design (patented) gives it excellent weight/performance and cost/performance ratios. The clamp consists of an integral band, two screws, two nuts and a gasket.



Characteristics

The B-B® 2 clamp ensures tightness up to gas temperatures of 800°C.

Tensile strength: over 3000 N

Torsional strength: over 150 Nm

Torsional strength after thermal cycling : over 300 Nm

Allowable leak rate: below 2 litre/min at 0.3 bar for pipes having diameters different by up to 0.6 mm.

Weight for diameter 50mm: 320g

The B-B® 2 clamp withstands corrosion, vibration and automotive fluids.

Range

The B-B® 2 clamp is mainly made of ferritic stainless steel for pipes having outside diameters of 40, 45, 50, 55, 60, 65 mm.

It also exists in austenitic stainless steel. The B-B® 2 clamp is supplied with Cr6-free coated steel or stainless steel bolts and screws.

Different diameters can also be produced upon request.

EXHAUST RETAINING CLAMP: B-B® 3

This clamp, inspired from the B-B® 2 clamp, has been developed to meet low-cost connection requirements on exhaust lines. Its innovative design (patented) gives it excellent weight/performance and cost/performance ratios. It consists of an integral band, a screw and a nut.

Characteristics

The B-B® 3 clamp ensures tightness up to gas temperatures of 800°C.

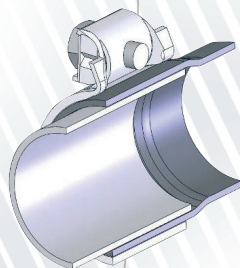
Allowable leak rate: below 6 litre/min at 0.3 bar for pipes having diameters different by up to 0.6 mm.

Weight for diameter 50 mm: 120 g for width 37 mm

The B-B® 3 clamp withstands corrosion, vibration and automotive fluids.

Range

From diameters 38 to 65 mm.



CAILLAU